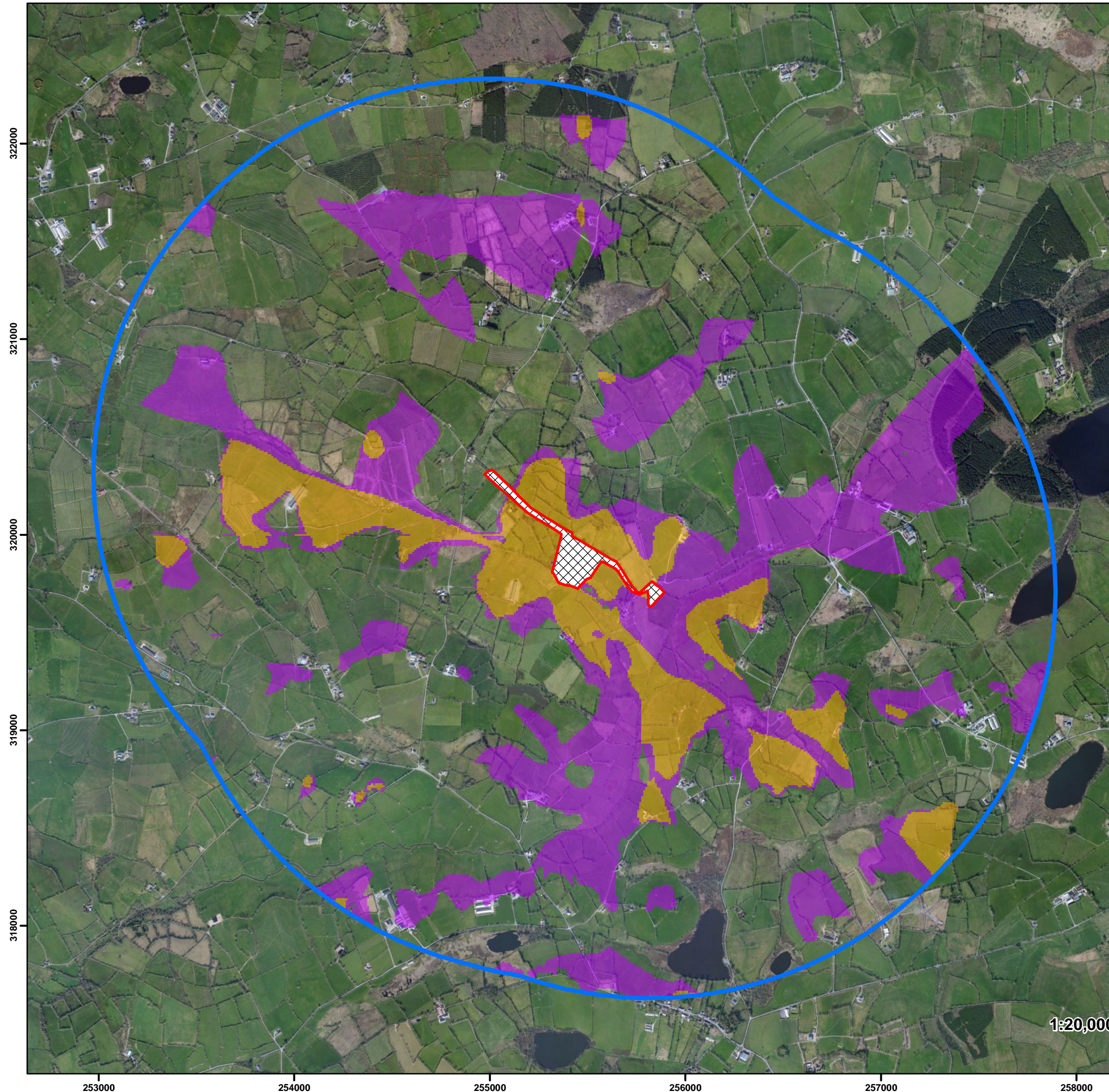


Standard ZTV Map (OSI DTM, 1.7m, 2km extent) - calculated using OSI digital terrain model (DTM) and represents a bare-ground scenario
The assumed receptor height is 1.7m and represents a person standing and/or a ground floor window



Site Boundary



2 Km Extent



Structures Potentially Visible

Control building and single circuit strain towers

Single circuit strain towers